

WPD-230
Wireless Presentation System



Quick Installation Guide
(Model Name: WPS-Interactive)

1. Package Contents

- WPS Box
- WPS USB Token
- Power Adapter (DC +5V, 2.5A)
- Antenna *2
- Quick Installation Guide
- Warranty Card

2. USB Token Contents

Client Folder

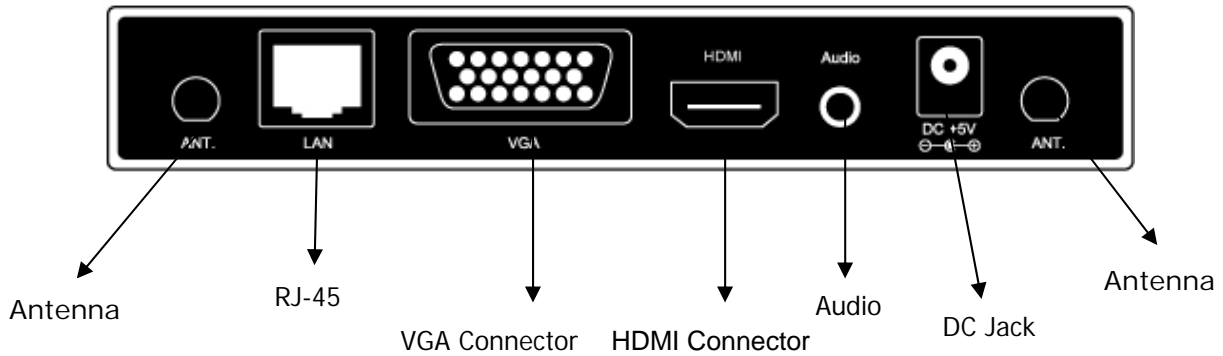
- Software and MobiShow software for Smartphone Applications Folder
- VAC (For Windows XP Audio Projection)
- VDD (For Virtual Extended Screen)
- PtG Converter (For MobiShow PtG function)
- SNMP Manager (For WPS device management)

3. Physical Details

- Front Panel

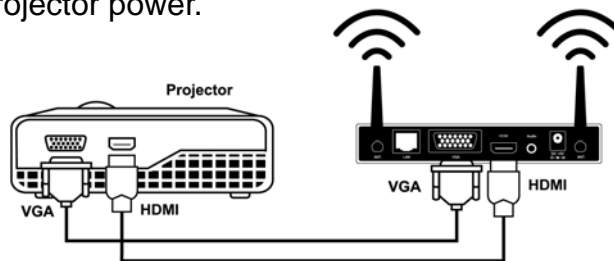


- Rear Panel



4. Installation

- 1) Connect projector VGA/HDMI cable to WPS box VGA/HDMI connector and turn on projector power.



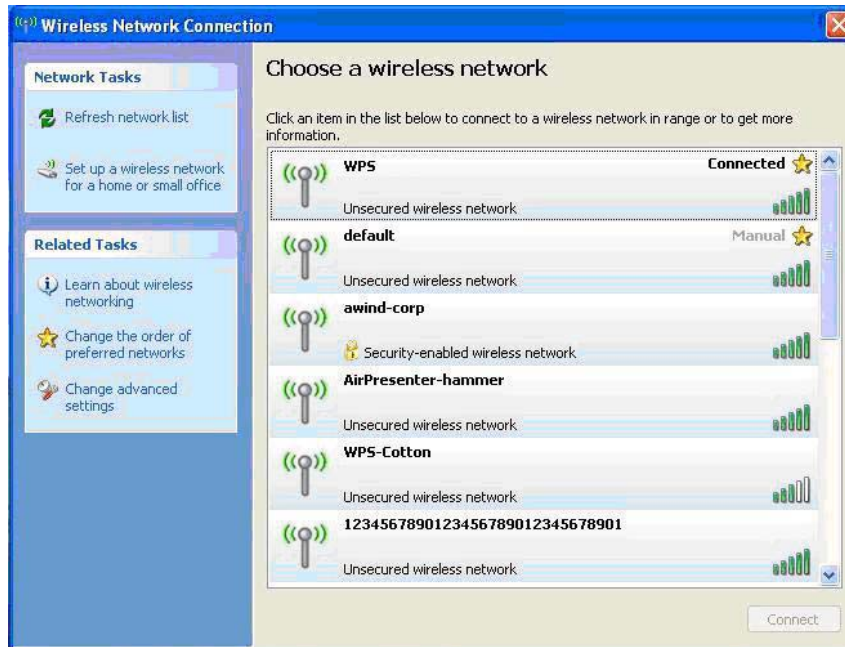
- 2) Turn on WPS box.

- ◆ When Projector shows the default menu on the screen as below, it indicates the WPS box is ready now.

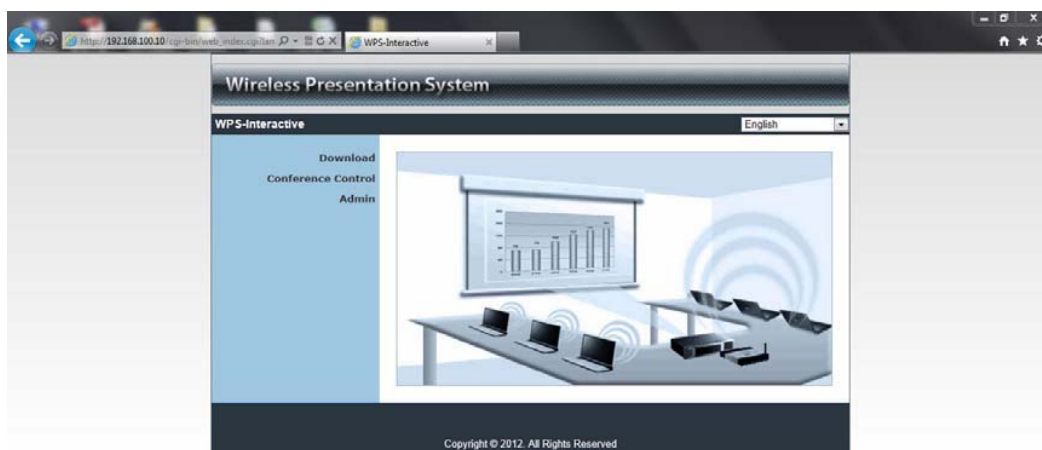


- **Windows**

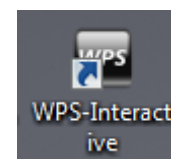
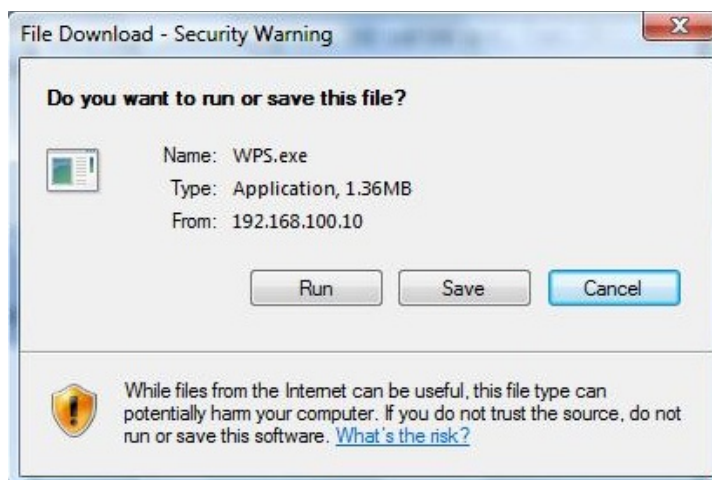
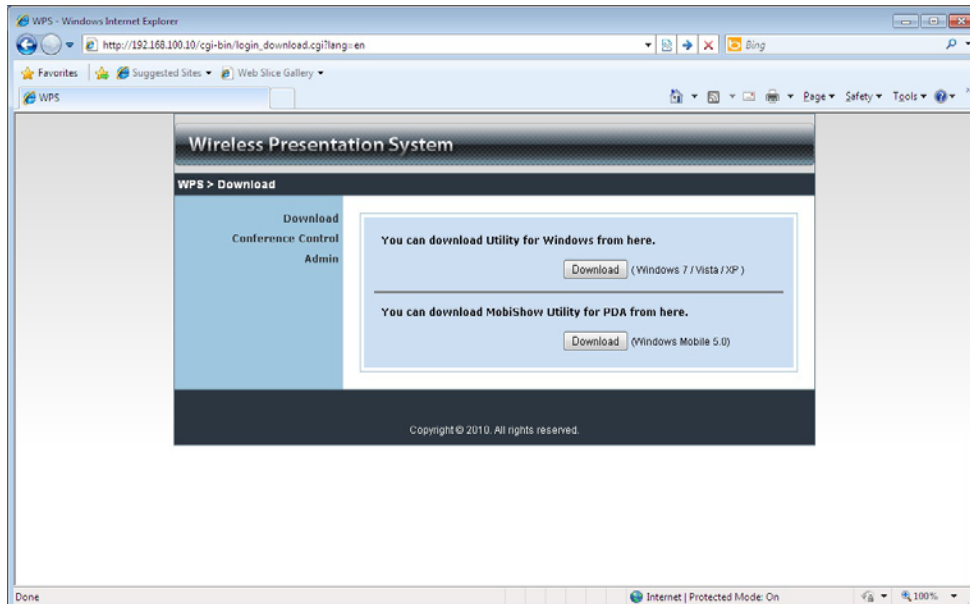
- 1) Make sure your PC WLAN is enabled already, and connect your PC with WPS box.



- 2) Open your browser and it will redirect to WPS main page automatically, or you can enter the IP address to access the WPS web home page.
 - ◆ The default IP address of WPS is **192.168.100.10** or refers to the IP address shown on the left corner of projector screen.




- 3) Download the client software. Please select the “Windows 7/Vista / XP” and execute the installation program.
 - ◆ After install the program, WPS shortcut will come out on the PC desktop.



- 4) Make sure your personal firewall allows WPS software to pass through.

- 5) Enter the **LOGIN CODE** and
- ◆ You can see the login code on the projector screen



- 6) Click the  button to start projection, or choose one of the numbers (1 to 4) to project to the split screen.




- **Mac**

- 1) Enable your WiFi and connect to WPS device.



- 2) Execute WPS client software for Mac. (You can find it in WPS USB Token or download it from the WPS web page)
- 3) Launch WPS software and enter the login code.



- 4) Click the  button to start projection.

