

FT-0006

Light Source



Description:

FT-0006 is a handy tool and instrument to provide you several different wavelengths to test the fiber equipment in the optical network and FTTx construction. FT-0006 is ideal for field or laboratory testing of optical communication system at 850 nm / 1300 nm for datacom testing, 1310 nm / 1550 nm / CWDM 1270 nm ~ 1610 nm (20 nm spans) for all WDM testing , as well as 1490 nm for FTTx testing by changing interchangeable SFP module. FT-0006 features zero warm up, superb productivity and is easy to use with pocket-size and rugged and handy design.

With LC / SC patch cord , FT-0006 can be used for all the most widespread fiber interfaces such as LC / ST / SC / FC connector. It is suitable to test both Singlemode and Multimode cables.

Internally there is also a specifically designed power circuit included; the APC (Auto Power Control) circuit provides steady power which avoids unstable laser output when the battery is low.

The LD output signal can be switched CW or Pulse Mode 270 Hz / 2 KHz Modulated Mode to simulate signal transmission. There is a dust proof cap which will prevent dust from getting into the inside of the LD connector. The cap also helps evade incidental exposure of the laser directly into your eyes.

Features:

- Pocket-size & rugged & handy design.
- Needless to pre-warm-up time.
- Interchangeable SFP Module design with LC or SC connector.
- Flexible to change any wavelength.
- High stability of the Output Power.
- Excellent & stable output wavelength.
- Excellent re-connection repeatability.
- Low Voltage Battery warning signal in LED.
- Compatible to LC Connectors.

FT-0006 Light Source



- Economic type and easy to use.
- Operates in CW (Continuous Wave) or Pulse Mode 270 Hz / 2 KHz
- The dust-proof design keeps fiber connectors clean
- Two AAA-size alkaline batteries
- LED indicator for Power, Battery Low indicators

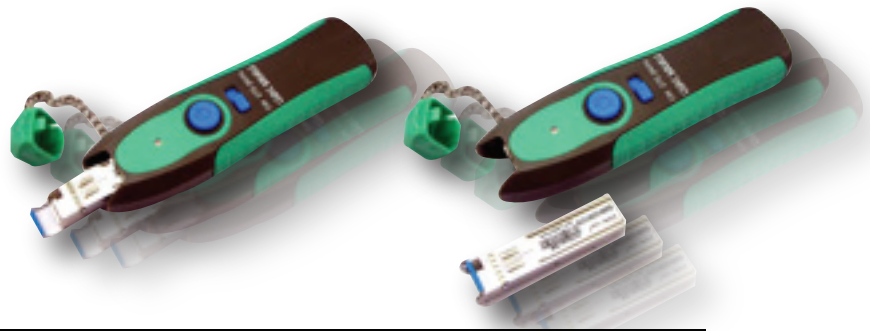
Application

- Maintenance CATV / Telecom / FTTH in Singlemode or Multimode fiber optical fiber network.
- Standard laboratories.
- High throughput quality assurance.

Specification

Laser Class	Class 1
Wavelength (nm)	850, 1300, 1310, 1550 1270, 1290, 1310, 1330, 1350, 1370, 1390, 1410, 1430, 1450, 1470, 1490, 1510, 1530, 1550, 1570, 1590, 1610,1625
Mode	CW / Pulse Mode 270 Hz / 2 KHz
Battery Type	AAA 1.5 V x 2
LED Indicator	Power On (GREEN) / Battery Low (RED)
Output Power Accuracy	+/- 0.2 dB
Output Power Stability (1 HR)	+/- 0.05 dB
Operating Temp.	0°C ~ 50°C
Storage Temp.	0°C ~ 70°C

FT-0006 Light Source



FT-0006-X-85	Min.	Typ.	Max.	Unit	Note
VCSEL Output Power	-5			dBm	@ 25°C 62.5 / 125 μm fiber
Center Wavelength λ C		850		nm	@ 25°C 62.5 / 125 μm fiber
Spectral Width Δ λ			0.85	nm	@ 25°C 62.5 / 125 μm fiber

FT-0006-X-13S	Min.	Typ.	Max.	Unit	Note
LED Output Power	-22			dBm	@ 25°C 62.5 / 125 μm fiber
Center Wavelength λ C	1270	1300	1370	nm	@ 25°C 62.5 / 125 μm fiber
Spectral Width Δ λ (FWHM)		130	180	nm	@ 25°C 62.5 / 125 μm fiber

FT-0006-X-13F	Min.	Typ.	Max.	Unit	Note
FP LD Output Power	-5			dBm	@ 25°C 9 / 125 μm fiber
Center Wavelength λ C	1290	1310	1330	nm	@ 25°C 9 / 125 μm fiber
Spectral Width Δ λ			<4	nm	@ 25°C 9 / 125 μm fiber

FT-0006-X-15F	Min.	Typ.	Max.	Unit	Note
FP LD Output Power	-5			dBm	@ 25°C 9 / 125 μm fiber
Center Wavelength λ C	1520	1550	1570	nm	@ 25°C 9 / 125 μm fiber
Spectral Width Δ λ			<4	nm	@ 25°C 9 / 125 μm fiber

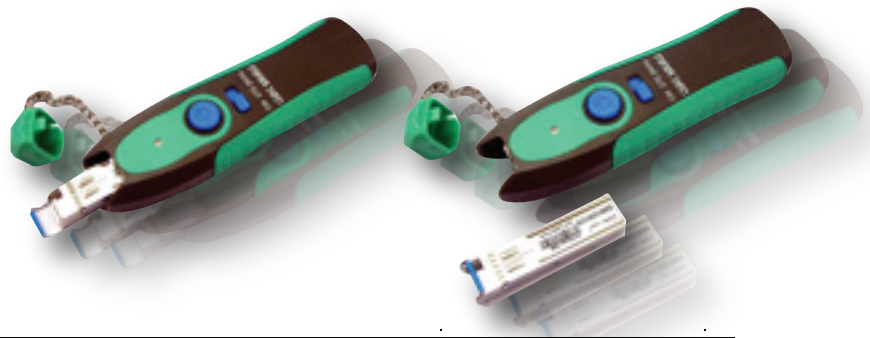
FT-0006-X-13D	Min.	Typ.	Max.	Unit	Note
DFB LD Output Power	-3			dBm	@ 25°C 9 / 125 μm fiber
Center Wavelength λ C	1290	1310	1330	nm	@ 25°C 9 / 125 μm fiber
Spectral Width Δ λ			<1	nm	@ 25°C 9 / 125 μm fiber

FT-0006-X-15D	Min.	Typ.	Max.	Unit	Note
DFB LD Output Power	-3			dBm	@ 25°C 9 / 125 μm fiber
Center Wavelength λ C	1530	1550	1570	nm	@ 25°C 9 / 125 μm fiber
Spectral Width Δ λ			<1	nm	@ 25°C 9 / 125 μm fiber

Remarks:

X: A/ LC connector	85: 850nm	13F: 1310nm, FP	15F: 1550nm, FP
B/ SC connector	13S: 1300nm	13D: 1310nm, DFB	15D: 1550nm, DFB

FT-0006 Light Source



FT-0006C-X-xxxx	Min.	Typ.	Max.	Unit	Note
CWDM LD Output Power	-3			dBm	@ 25°C 9 / 125 μm fiber
Center Wavelength λ _C	λ _C *- 3	λ _C *	λ _C *+3	nm	@ 25°C 9 / 125 μm fiber
Spectral Width Δ λ			<1	nm	@ 25°C 9 / 125 μm fiber

X=A , LC Connector

X=B , SC Connector

*C=CWDM

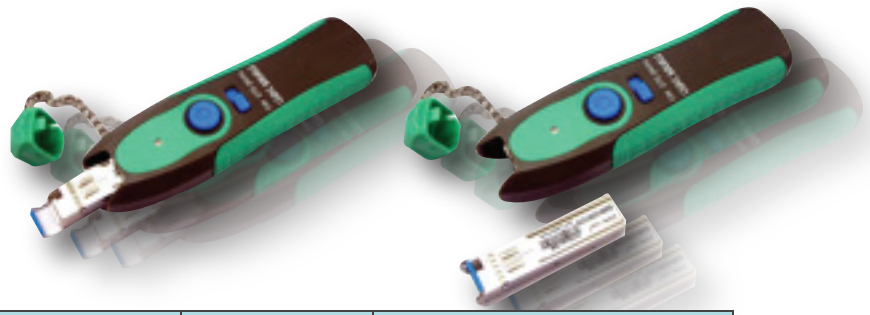
xxxx:

1270 nm / 1290 nm / 1310 nm / 1330 nm / 1350 nm / 1370 nm / 1390 nm / 1410 nm / 1430 nm /
1450 nm / 1470 nm / 1490 nm / 1510 nm / 1530 nm / 1550 nm / 1570 nm / 1590 nm / 1610 nm /
1625 nm

Ordering Information:

Part Number	Source	Wavelength	Remark
FT-0006-A-85	VCSEL	850 nm	SFP LC Receptacle
FT-0006-B-85	VCSEL	850 nm	SFP SC Receptacle
FT-0006-A-13S	LED	1300 nm	SFP LC Receptacle
FT-0006-B-13S	LED	1300 nm	SFP SC Receptacle
FT-0006-A-13F	FP LD	1310 nm	SFP LC Receptacle
FT-0006-B-13F	FP LD	1310 nm	SFP SC Receptacle
FT-0006-A-15F	FP LD	1550 nm	SFP LC Receptacle
FT-0006-B-15F	FP LD	1550 nm	SFP SC Receptacle
FT-0006-A-13D	DFB LD	1310 nm	SFP LC Receptacle
FT-0006-B-13D	DFB LD	1310 nm	SFP SC Receptacle
FT-0006-A-15D	DFB LD	1550 nm	SFP LC Receptacle
FT-0006-B-15D	DFB LD	1550 nm	SFP SC Receptacle
FT-0006C-A-1270	CWDM LD	1270 nm	SFP LC Receptacle
FT-0006C-B-1270	CWDM LD	1270 nm	SFP SC Receptacle
FT-0006C-A-1290	CWDM LD	1290 nm	SFP LC Receptacle
FT-0006C-B-1290	CWDM LD	1290 nm	SFP SC Receptacle
FT-0006C-A-1310	CWDM LD	1310 nm	SFP LC Receptacle
FT-0006C-B-1310	CWDM LD	1310 nm	SFP SC Receptacle

FT-0006 Light Source



Part Number	Source	Wavelength	Remark
FT-0006C-A-1330	CWDM LD	1330 nm	SFP LC Receptacle
FT-0006C-B-1330	CWDM LD	1330 nm	SFP SC Receptacle
FT-0006C-A-1350	CWDM LD	1350 nm	SFP LC Receptacle
FT-0006C-B-1350	CWDM LD	1350 nm	SFP SC Receptacle
FT-0006C-A-1370	CWDM LD	1370 nm	SFP LC Receptacle
FT-0006C-B-1370	CWDM LD	1370 nm	SFP SC Receptacle
FT-0006C-A-1390	CWDM LD	1390 nm	SFP LC Receptacle
FT-0006C-B-1390	CWDM LD	1390 nm	SFP SC Receptacle
FT-0006C-A-1410	CWDM LD	1410 nm	SFP LC Receptacle
FT-0006C-B-1410	CWDM LD	1410 nm	SFP SC Receptacle
FT-0006C-A-1430	CWDM LD	1430 nm	SFP LC Receptacle
FT-0006C-B-1430	CWDM LD	1430 nm	SFP SC Receptacle
FT-0006C-A-1450	CWDM LD	1450 nm	SFP LC Receptacle
FT-0006C-B-1450	CWDM LD	1450 nm	SFP SC Receptacle
FT-0006C-A-1470	CWDM LD	1470 nm	SFP LC Receptacle
FT-0006C-B-1470	CWDM LD	1470 nm	SFP SC Receptacle
FT-0006C-A-1490	CWDM LD	1490 nm	SFP LC Receptacle
FT-0006C-B-1490	CWDM LD	1490 nm	SFP SC Receptacle
FT-0006C-A-1510	CWDM LD	1510 nm	SFP LC Receptacle
FT-0006C-B-1510	CWDM LD	1510 nm	SFP SC Receptacle
FT-0006C-A-1530	CWDM LD	1530 nm	SFP LC Receptacle
FT-0006C-B-1530	CWDM LD	1530 nm	SFP SC Receptacle
FT-0006C-A-1550	CWDM LD	1550 nm	SFP LC Receptacle
FT-0006C-B-1550	CWDM LD	1550 nm	SFP SC Receptacle
FT-0006C-A-1570	CWDM LD	1570 nm	SFP LC Receptacle
FT-0006C-B-1570	CWDM LD	1570 nm	SFP SC Receptacle
FT-0006C-A-1590	CWDM LD	1590 nm	SFP LC Receptacle
FT-0006C-B-1590	CWDM LD	1590 nm	SFP SC Receptacle
FT-0006C-A-1610	CWDM LD	1610 nm	SFP LC Receptacle
FT-0006C-B-1610	CWDM LD	1610 nm	SFP SC Receptacle
FT-0006C-A-1625	DFB LD	1625 nm	SFP LC Receptacle
FT-0006C-B-1625	DFB LD	1625 nm	SFP SC Receptacle